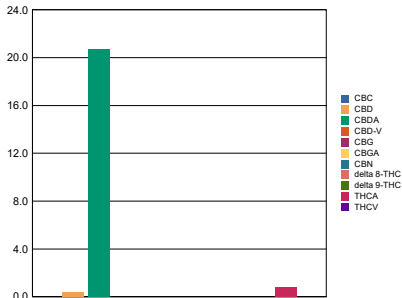


Sample Information			RS (GCMS-MS)	ppm	RL	Terpenes (HPLC)	%	mg/g
Sample Identification	Cherry Wine #1		Compound			Compound		
Laboratory Number	1912157-01		Acetone	NT	NT	alpha-Bisabolol	NT	NT
Batch Number	1		Acetonitrile	NT	NT	(-)-Borneol and (+)-Borneol	NT	NT
Matrix	Flower		Benzene	NT	NT	Camphene	NT	NT
Cannabinoid (HPLC)			n-Butane	NT	NT	Camphor	NT	NT
Compound	%	mg/g	Carbon Tetrachloride	NT	NT	beta-Caryophyllene	NT	NT
THCA	0.80	8	Chloroform	NT	NT	trans-Caryophyllene	NT	NT
delta 9-THC	ND	ND	1,2-Dichloroethane	NT	NT	Caryophyllene Oxide	NT	NT
delta 8-THC	ND	ND	Ethanol	NT	NT	alpha-Cedrene	NT	NT
CBGA	ND	ND	Ethyl acetate	NT	NT	Cedrol	NT	NT
THCV	ND	ND	Ethylene oxide	NT	NT	Endo-fenchyl Alcohol	NT	NT
CBD	20.68	206.8	n-Heptane	NT	NT	Eucalyptol	NT	NT
CBD-V	ND	ND	n-Hexane	NT	NT	Fenchone	NT	NT
CBN	ND	ND	iso-Butane	NT	NT	Geraniol	NT	NT
CBG	ND	ND	iso-Pentane	NT	NT	Geranyl acetate	NT	NT
CBC	ND	ND	Methylene Chloride	NT	NT	Guaiol	NT	NT
Cannabinoids Total			2-Propanol (IPA)	NT	NT	Hexahydrothymol	NT	NT
Max Active THC	0.70	6.99	Tetrahydrofuran	NT	NT	alpha-Humulene	NT	NT
Max Active CBD	18.46	184.56	Toluene	NT	NT	Isoborneol	NT	NT
T.Active Cannabinoids	0.36	3.56	Trichloroethene	NT	NT	Isopulegol	NT	NT
Total Cannabinoids	21.80	218.00	o-xylene	NT	NT	Limonene	NT	NT
Max Active Ratios			Xylenes (m,p)	NT	NT	Linalool	NT	NT
26.39 : 1 CBD to THC						p-Mentha-1,5-diene	NT	NT
0.04 : 1 THC to CBD						beta-Myrcene	NT	NT

Cannabinoid (%)



Metals	ppm	RL
Compound		
Arsenic	NT	NT
Cadmium	NT	NT
Mercury	NT	NT
Lead	NT	NT
Percent Moisture		
NT %		
Water Activity		
NT		

RL = Reporting Limit
 NA = Not Applicable
 NT = Not Tested
 ND = Non Detected